



Key Investor Information

This document provides you with key investor information about this Fund. It is not marketing material. The information is required by law to help you understand the nature and the risks of investing in this Fund. You are advised to read it so you can make an informed decision about whether to invest.

Invesco Euro Cash 3 Months UCITS ETF (the "Fund") A sub-fund of Invesco Markets III plc (the "Umbrella Fund") Acc (ISIN: IE00B3BPCH51) (the "Share Class")

The Fund is managed by Invesco Investment Management Limited, part of the Invesco Group.

Objectives and Investment Policy

- The Fund is a passively managed Exchange-Traded Fund. This means shares in the Fund are listed and traded on one or more stock exchange(s).
- The objective of the Fund is to provide investors with investment results which, before expenses, would correspond to the price and yield performance of the return on the FTSE Eurozone Government Bill 0-6 Month Capped Index (Total Return) in EUR (the "Index")¹ by investing in a representative sample of the constituents of the Index.
- The Fund's shares are listed on one or more Stock Exchange(s). Generally, only Authorised Participants may subscribe or redeem shares directly with the Fund. Other investors can buy or sell shares daily through an intermediary directly or on Stock Exchange(s) on which the shares are traded. In exceptional circumstances other investors will be permitted to redeem their shares directly from Invesco Markets III plc in accordance with the redemption procedures set out in the prospectus, subject to any applicable laws and relevant charges.
- An index measures the performance of a selection of instruments representative of the overall market or subsection of it.
- The Index consists of zero coupon bills from the following seven Eurozone countries; Belgium, France, Germany, Italy, Netherlands, Portugal and Spain; selected using specific criteria. The bills are issued with maturities of up to six months. The average maturity of the bills is three months.
- To achieve the investment objective, the Fund will employ sampling techniques to select securities in the Index which may include but are not limited to index weighted average duration, industry sectors, country weights, liquidity and credit quality. The use of the sampling approach will result in the Fund holding a smaller number of securities than are in the underlying Index. The Index rebalances on a weekly basis.
- The Fund may, in limited circumstances, hold shares that are not part of the Index in order to meet the objectives of the Fund.
- You can buy and sell shares in the Fund on any Business Day (as defined in the Prospectus).
- Any income from your investment will be reinvested.

Risk and Reward Profile

Lower Risk ← Higher Risk
Typically lower rewards → Typically higher rewards

1	2	3	4	5	6	7
---	---	---	---	---	---	---

- The Share Class is in risk category 1 due to the rises and falls of its price or simulated data in the past.
- As the Share Class' risk category has been calculated using historical data, it may not be a reliable indication of the Share Class' future risk profile.
- The risk category may change in the future and is not guaranteed.
- The lowest category does not mean a risk free investment.

Other Risks

- **General Investment Risk:** The value of investments, and income from them, can go down as well as up and you may not get back the full amount you invested.
- **Concentration risk:** The Fund might be concentrated in a specific region or sector or be exposed to a limited number of positions, which might result in greater fluctuations in the value of the Fund than for a fund that is more diversified.
- **Credit risk:** The creditworthiness of the debt the Fund is exposed to may weaken and result in fluctuations in the value of the Fund. There is no guarantee the issuers of debt will repay the interest and capital on the redemption date. The risk is higher when the Fund is exposed to high yield debt securities.
- **Interest Rate Risk:** Changes in interest rates will result in fluctuations in the value of the Fund.
- **Securities lending:** The Fund may be exposed to the risk of the borrower defaulting on its obligation to return the securities at the end of the loan period and of being unable to sell the collateral provided to it if the borrower defaults.
- For more information on risks, please see the Fund prospectus under "Risk Factors", which is available at etf.invesco.com (select your country and navigate to the Prospectus on the Documents section on the product page).

¹Investors should note that the Index is the intellectual property of the index provider.

The Fund is not sponsored or endorsed by the index provider and a full disclaimer can be found in the Fund's prospectus.

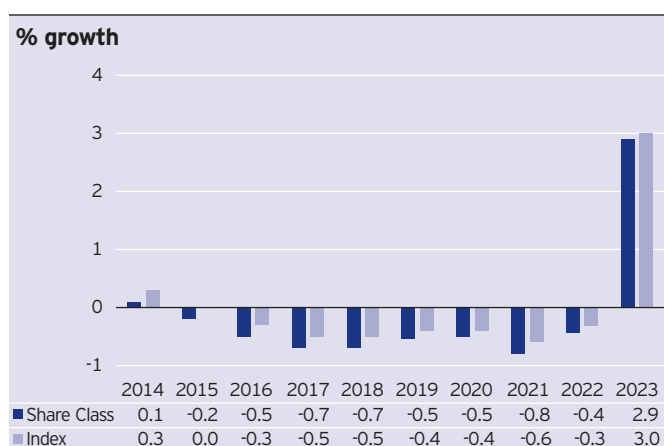
Charges

The charges you pay are used to pay the costs of running the Fund, including the costs of marketing and distributing it. These charges reduce the potential growth of your investment.

One-off charges taken before or after you invest	
Entry charge	None*
Exit charge	None*
Any charges shown above are the maximum that might be taken out of your money before it is invested.	
Charges taken from the Share Class over a year	
Ongoing charge	0.09%
Charges taken from the Share Class under certain specific conditions	
Performance fee	None

- Any entry and exit charges shown are maximum figures. Where charges are shown, in some cases you might pay less; you can find this out from your financial adviser. If you buy and sell directly from the Fund, you may pay a transaction fee of maximum 3% (for deals settled in cash) or maximum 1% (for deals settled with securities). Investors dealing on a stock exchange may pay fees charged by their stock brokers.
- The ongoing charge is based on the fee paid to the Manager. The Manager is responsible for discharging from its fee, costs attributable to the Investment Manager, Administrator, Depositary as well as the Operational Expenses incurred by the Fund.
- It excludes portfolio transaction costs except in the case of an entry or exit charge paid by the Fund when buying or selling shares/units in another fund.
- The Fund may engage in securities lending, whereby 90% of the revenues arising from securities lending will be returned to the Fund and 10% of the revenues will be retained by the securities lending agent.
- For more information on charges, please see the relevant charges section in the Fund supplement under "General Information Relating to the Fund", which is available at etf.invesco.com (select your country and navigate to the Documents section on the product page.)

Past Performance



- Fund launch date: 08 October 2008.
- Share Class launch date: 08 October 2008.
- The base currency of the Fund is EUR.
- Past performance of the Share Class is calculated in EUR.
- Performance is calculated based on the net asset value of the Fund after deduction of ongoing charges and is inclusive of gross income reinvested. Any entry/exit charges shown are excluded from the calculation.
- Past performance is not a guide to future performance.

Practical Information

- Depositary: The Bank of New York Mellon SA/NV, Dublin Branch, Riverside Two, Sir John Rogerson's Quay, Dublin 2, D02 KV60, Ireland.
- The Irish tax regime may have an impact on your personal tax position and there may be tax implications in your country of residence and/or origin.
- Invesco Investment Management Limited may be held liable solely on the basis of any statement contained in this document that is misleading, inaccurate or inconsistent with the relevant parts of the Prospectus.
- The Umbrella Fund is structured by having different sub-funds. The assets and liabilities of each sub-fund are segregated by Irish law. As a consequence the assets of the Fund will not be available to meet the liabilities of another sub-fund within the Umbrella Fund.
- More share classes are available for this Fund. You can find more information on our website.
- You can check the net asset value per share for the Share Class as well as other information, including the Fund's investment portfolio, on our website. The prices on which you can buy and sell shares, excluding transaction fees, can be found on exchanges and from certain providers of financial data (e.g. Bloomberg, Reuters, Telekurs).
- Details of the remuneration policy of Invesco Investment Management Limited are available at etf.invesco.com and a paper copy is available to investors free of charge upon request.
- Subject to satisfying certain criteria as set out in the prospectus, investors may be able to exchange their investment in the Fund for shares in another sub-fund of the Company which is being offered at that time.
- Further information about the Fund can be obtained from the prospectus and latest annual report. This document is specific to the Invesco Euro Cash 3 Months UCITS ETF. However, the prospectus and annual report are prepared for the umbrella fund, Invesco Markets III plc, of which Invesco Euro Cash 3 Months UCITS ETF is a sub-fund. These documents are available free of charge. They can be obtained along with other information at etf.invesco.com (select your country and navigate to Documents section on the product page), or by calling +353 1 439 8000.